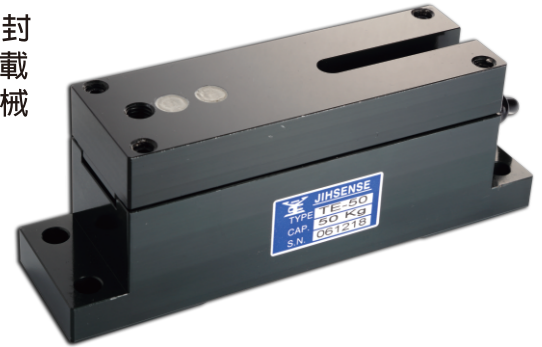


# TENSION LOAD CELL

本型TE張力感測器，係採用高敏感剪力感應結構及完全密封式保護，使力量感應達到最高之精度與敏感度，特別設計之過載保護使本感測器有較大之過載承受能力，特別適用於自動化機械之張力量測及控制上，具以下之特點：

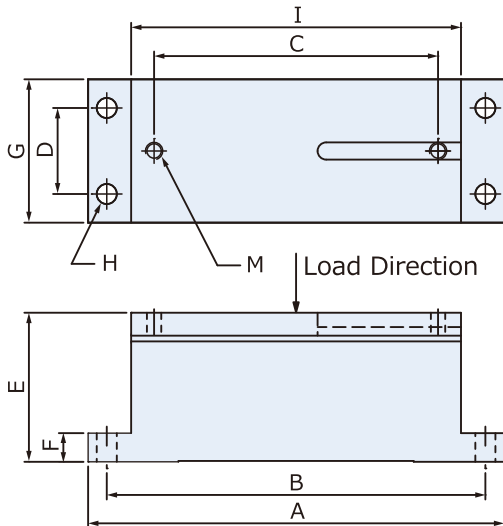
This tension force load cell uses high sensitivity shear beam as sensing element and hermetically sealed construction. Specially designed overload protection device greatly increases overload capacity.



## ■ 特點 Features

- 過載保護 Overload protection
- 密封保護 Hermetically Sealed
- 高精度 High accuracy
- TE - 100, 250, 500 N  
1, 2, 3.5, 5, 10, 20, 30, 50, 100 kN

## ■ Installation Dimensions



TYPE	A	B	C	D	E	F	G	H	I	M
TE-100 N (10.20 kgf)	145	132	83	30	52	10	50	7	115	M6×1.0×10 deep (T Slot 40 long)
TE-250 N (25.49 kgf)										
TE-500 N (50.99 kgf)	190	170	120	30	71	15	50	9	150	M10×1.5×15 deep (T Slot 65 long)
TE-1 kN (102.0 kgf)										
TE-2 kN (203.9 kgf)										
TE-3.5 kN (356.9 kgf)	250	219	136	45	76	20	75	13	190	M12×1.75 ×20 deep
TE-5 kN (509.9 kgf)										
TE-10 kN (1.020 tf)										
TE-20 kN (2.039 tf)										
TE-30 kN (3.059 tf)										
TE-50 kN (5.099 tf)	290	260	184	50	103	24	80	13	230	M16×2.0×25 deep (T Slot 40 long)
TE-100 kN (10.20 tf)										

## ■ Specification

額定輸出 Rated Output	1.0mV/V
總和誤差 Total Error	±0.3%R.O.
重現性 Repeatability	±0.2%R.O.
潛變 Creep	0.05%/20min
輸入阻抗 Input Resistance	430 or 405 or ±25Ω
輸出阻抗 Output Resistance	350Ω ±5Ω
最大輸入電壓 Max. Excitation Voltage	20V
建議輸入電壓 Recommended Excitation Voltage	10V
溫度補償範圍 Compensated Temp. Range	-10°C~50°C
使用範圍 Safe Temp. Range	-20°C~70°C
溫度對零點之影響 Temp. Effect on Zero Balance	0.05%R.O./10°C
溫度對額定輸出之影響 Temp. Effect on Rated Output	0.03%Load/10°C
零點誤差 Zero Balance	±3%R.O.
容許負荷 Safe Over Load Rating	200%
導線長度 Cable Length	3m
接線方式 Cable Connection	Input:Red(+)Exci : Black(-)Exci Output:Green(+)Sign White(-)Sign