

S LOAD CELL

本S型荷重元為系統常用的荷重元，由於固定點與施力點在同一軸線上，安裝容且體積小，成本較低；本型荷重元本體採用高強度合金鋼(100Kg以下為鋁合金)，並以完全密封方式保護感應元件，因此非常精確耐用，特別適合於吊秤、精確重量、力量量測及自動控制上，具以下之特點：

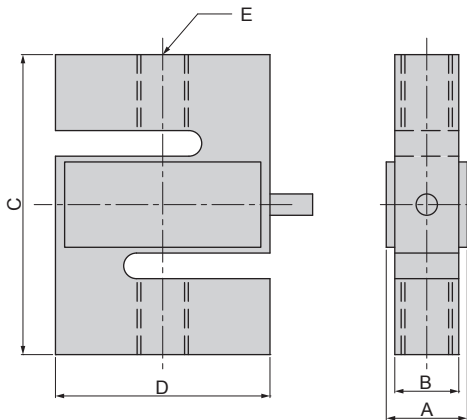
S-type load cell is the most common one, and its fixed and force point are on the same axis. Consisted of high strength alloy steel and completely sealed. It is durable, small and low-cost. Ideal for use in truck scales, exact weight measurement and automatic weight control units.

特點 Features

- 高精準度 **High accuracy**
- 溫度補償 **Thermally compensated**
- 密封保護 **Moisture or Hermetically sealed**
- 低價格 **Low cost**
- **S- 1, 2, 5, 10, 20, 35, 50, 100, 200, 350, 500, 750 kgf**
- **S- 1, 1.5, 2, 3, 5, 7.5, 10 tf**



Installation Dimensions



TYPE	A	B	C	D	E
S-1					
S-2					
S-5					
S-10	17	15	70	50	M8 × 1.25
S-20					
S-35					
S-50					
S-100	17	15	70	50	M12 × 1.75
S-200					
S-350	20	18	70	50	M12 × 1.75
S-500					
S-750					
S-1 tf	23	21	75	50	M12 × 1.75
S-1.5tf					
S-2 tf	26	24	84	64	M16 × 2.0
S-3 tf					
S-5 tf	33	31	100	64	M20 × 2.5
S-7.5tf					
S-10 tf	46	44	130	90	M30 × 3.5

Specification

額定輸出 Rated Output	2.0mV/V(S 1~5 1.0mV/V)
總和誤差 Total Error	±0.05%R.O.
重現性 Repeatability	±0.03%R.O.
潛變 Creep	0.05%/20min
輸入阻抗 Input Resistance	430 or 405 ± 25Ω
輸出阻抗 Output Resistance	350 ± 5Ω
最大輸入電壓 Max. Excitation Voltage	20V
建議輸入電壓 Recommended Excitation Voltage	10V
溫度補償範圍 Compensated Temp.Range	-10°C~50°C
使用範圍 Safe Temp. Range	-20°C~70°C
溫度對零點之影響 Temp. Effect on Zero Balance	0.05%R.O./10°C
溫度對額定輸出之影響 Temp. Effect on Rated Output	0.03%Load/10°C
零點誤差 Zero Balance	±3%R.O.
容許負荷 Safe Overload Rating	150%
導線長度 Cable Length	3m
接線方式 Cable Connection	Input:Red(+)Exci : Black(-)Exci Output:Green(+)Sign White(-)Sign