

ROTARY TORQUE SENSOR

RT迴轉式扭力計，係專為旋轉中量測扭力而設計之感測器，採用剪力是轉軸應力量測結構，剛性強，結構穩固，轉速高。採用碳式傳遞量測訊號，雜訊低，重量輕，一體式設計，簡潔美觀，堅固耐用。具以下之特點：

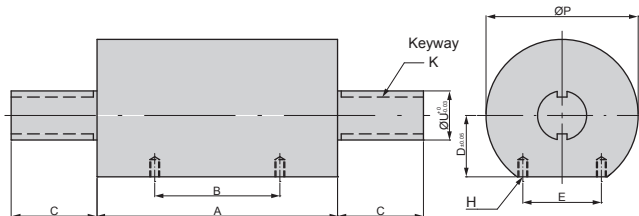
RT Rotary Torque sensor is a special design for measuring the torque on a continual rotation shaft. It constructs of a rigid spindle with shear strain detect sensor. The high-speed carbon brush picks up torque signal. Yet, that is low noise, small, light and precise.



特點 Features

- 體積小 **Small**
- 剛性強 **Rigid**
- 高轉速 **High Speed**
- 低雜訊 **Low Noise**
- **RT-0.25, 0.5, 1, 2.5, 5, 10, 25, 50, 100, 250, 500, 1k, 2.5k, 5k, 10k Nm**

Installation Dimensions



Model	A	B	C	D	E	H	K	P	U
RT-0.25	96	51	20	18	32	M4×0.7 ×7 deep	3×1.8	52	10
RT-0.5									
RT-1									
RT-2.5									
RT-5									
RT-10	98	51	35	25	32	M4×0.7 ×7 deep	4×2.5	62	20
RT-25									
RT-50									
RT-100	115	65	60	36	44	M6×1.0 ×8 deep	10×5	88	40
RT-250									
RT-500									
RT-1 k	154	90	90	51	60	M6×1.0 ×8 deep	15×5	123	60
RT-2.5k									
RT-5 k	160	95	105	58	66	M6×1.0 ×8 deep	18×6	138	70
RT-10 k	166	95	135	73	84	M8×1.25 ×10 deep	24×8	174	90

Specification

額定輸出 Rated Output	1mV/V
總和誤差 Total Error	±0.3%R.O.
重現性 Repeatability	±0.2%R.O.
潛變 Creep	0.1%/20min
輸入阻抗 Input Resistance	430 or 385 or 350Ω
輸出阻抗 Output Resistance	350Ω
最大輸入電壓 Max. Excitation Voltage	20V
建議輸入電壓 Recommended Excitation Voltage	10V
使用範圍 Safe Temp. Range	-10°C~50°C
容許轉速	100NM 以下 5000RPM 250NM 以下 4000RPM
溫度對零點之影響 Temp. Effect on Zero Balance	0.05%/10°C
溫度對額定輸出之影響 Temp. Effect on Rated Output	0.03%/10°C
零點誤差 Zero Balance	±3%R.O.
容許負荷 Safe Overload Rating	150%
導線長度 Cable Length	3m
接線方式 Cable Connection	Input:Red(+)/Exci : Black(-)/Exci Output:Green(+)/Sign White(-)/Sign