

PIN LOAD CELL

PIN荷重元係專為大型載重監測而設計之荷重元，使用雙剪力樑式結構，並以應變規為感測元件，變形量小，精度高。適用於吊掛，滑輪，纜線拉力之量測上。具以下之特點：

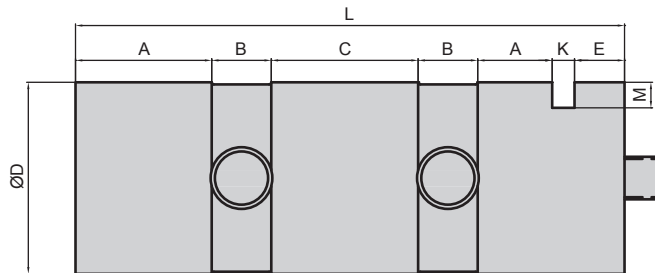
The PIN Load cell is a design for a heavy load measurement system. Using a double shear beam-type structure, and use the strain gauge for the sensor element. Its features are small deformation and high precision. It is ideally used to the hang, pulley and pull measurement.

特點 Features

- **PIN 型結構** **PIN-type structure**
- **剛性強** **Rigid**
- **安裝容易** **Easy installation**
- **雙向感應** **Bidirectional measurement**
- **額定荷重** **PIN-0.5, 1, 2, 5, 10, 20, 50, 100 t**



Installation Dimensions



TYPE	A	B	C	D	E	K	M	L
PIN-0.5 t	15	10	25	25	4	3	3	82
PIN-1 t								
PIN-2 t								
PIN-5 t	15	10	36	40	6	4	5	96
PIN-10 t	25	10	54	60	8	5	7	137
PIN-20 t								
PIN-50 t	40	12	62	80	10	7	10	183
PIN-100t	60	15	98	100	20	10	15	278

Specification

額定輸出 Rated Output	1.0mV/V 以上
總和誤差 Total Error	±0.5%R.O.
重現性 Repeatability	±0.2%R.O.
潛變 Creep	0.05%/20min
輸入阻抗 Input Resistance	385Ω ± 5%
輸出阻抗 Output Resistance	350Ω ± 5%
最大輸入電壓 Max. Excitation Voltage	20V
建議輸入電壓 Recommended Excitation Voltage	10V
溫度補償範圍 Compensated Temp.Range	-10°C~50°C
容許溫度範圍 Safe Temp. Range	-20°C~70°C
溫度對零點之影響 Temp. Effect on Zero Balance	0.01%/°C
溫度對額定輸出之影響 Temp. Effect on Rated Output	0.005%/°C
零點誤差 Zero Balance	±3%R.O.
導線長度 Cable Length	5m
接線方式 Cable Connection	Input:Red(+)/Exci : Black(-)/Exci Output:Green(+)/Sign White(-)/Sign