

ML LOAD CELL

ML荷重元係高精度力量感測器，使用應變規為感測元件，變形量小，精度高，所有感測電路均藏於金屬彈性體內，完全密封保護，不受外界干擾，穩定性高，具以下之特點：

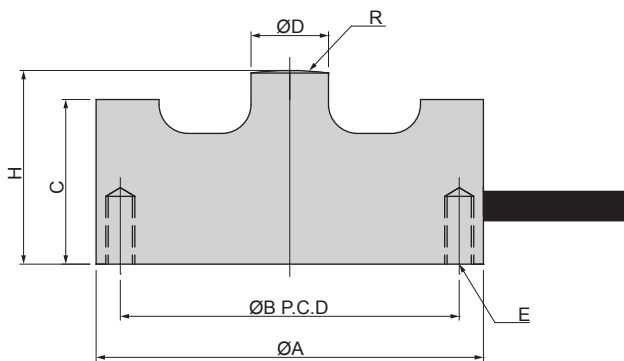
ML load cell is precision, small and compact. The sensing element imbedded in the metal structure, and hermetically sealed. It is ideally use to force control machine, scales and general weight measurement.



特點 Features

- 高精度 **High accuracy**
- 剛性強 **Rigid**
- 溫度補償 **Thermally compensated**
- 整體密封保護 **Hermetically Sealed**
- **ML- 2.5, 5, 10, 25, 50, 100, 250, 500 kgf**
- **ML- 1, 2, 3, 5 tf**

Installation Dimensions



TYPE	A	B	C	H	D	R	E
ML-2.5	35	31	15	18	5	20	(4)M2.5×0.45 ×7 deep
ML-5							
ML-10							
ML-25							
ML-50	40	35	17	20	8	30	(4)M3×0.5 ×7 deep
ML-100							
ML-250							
ML-500	50	44	22	25	12	40	(4)M4×0.7 ×10 deep
ML-1tf							
ML-2tf							
ML-3tf	50	44	22	25	15	40	(4)M4×0.7 ×10 deep
ML-5tf							

Specification

額定輸出 Rated Output	1.5mV/V
總和誤差 Total Error	±0.1%R.O.
重現性 Repeatability	±0.05%R.O.
潛變 Creep	0.1%/20min
輸入阻抗 Input Resistance	430 or 405 ± 25Ω
輸出阻抗 Output Resistance	350 ± 5Ω
最大輸入電壓 Max. Excitation Voltage	10V
建議輸入電壓 Recommended Excitation Voltage	3-8V
溫度補償範圍 Compensated Temp.Range	-10°C~50°C
使用範圍 Safe Temp. Range	-20°C~70°C
溫度對零點之影響 Temp. Effect on Zero Balance	0.05%R.O./10°C
溫度對額定輸出之影響 Temp. Effect on Rated Output	0.03%Load/10°C
零點平衡 Zero Balance	±3%R.O.
容許負荷 Safe Overload Rating	150%
導線長度 Cable Length	3m
接線方式 Cable Connection	Input:Red(+)/Exci : Black(-)/Exci Output:Green(+)/Sign White(-)/Sign