

# MC MINI LOAD CELL

MC迷你荷重元係高精度力量感測器，使用應變規為感測元件，變形量小，精度高，所有感測電路均藏於金屬彈性體內，完全密封保護，不受外界干擾，穩定性高，體積非常小，容易安裝於結構體內，具以下之特點：

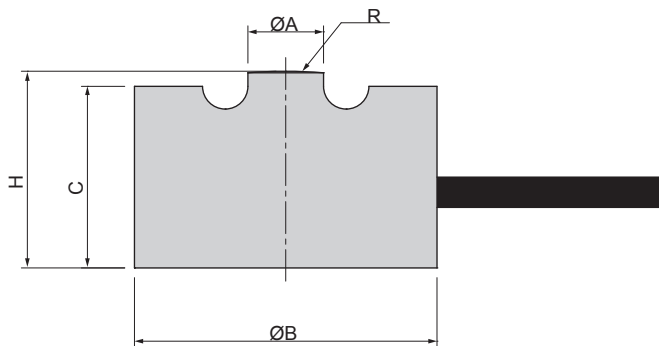
MC load cell is precision, small and compact. The sensing element imbedded in the metal structure, and hermetically sealed. It is ideally use to force control automatic machine.



## 特點 Features

- 體積小 **Tinny**
- 剛性強 **Rigid**
- 低雜訊 **Noise Free**
- 整體密封保護 **Hermetically Sealed**
- **MC- 2.5, 5, 10, 25, 50, 100, 250, 500 kgf**
- **MC- 1, 2, 3, 5 tf**

## Installation Dimensions



TYPE	A	B	C	H	R
MC-2.5	3	16	10	11	20
MC-5					
MC-10					
MC-25					
MC-50	5	20	12	13	30
MC-100					
MC-250					
MC-500	8	24	13	15	40
MC-1tf					
MC-2tf					
MC-3tf	18	28	13	16	40
MC-5tf					

## Specification

額定輸出 Rated Output	1.0mV/V
總和誤差 Total Error	±0.5%R.O.
重現性 Repeatability	±0.3%R.O.
潛變 Creep	0.1%/20min
輸入阻抗 Input Resistance	430 or 405 ± 25Ω
輸出阻抗 Output Resistance	350 ± 5Ω
最大輸入電壓 Max. Excitation Voltage	5V
建議輸入電壓 Recommended Excitation Voltage	3-5V
溫度補償範圍 Compensated Temp.Range	-10°C~50°C
使用範圍 Safe Temp. Range	-20°C~70°C
溫度對零點之影響 Temp. Effect on Zero Balance	0.1%R.O./10°C
溫度對額定輸出之影響 Temp. Effect on Rated Output	0.05%Load/10°C
零點誤差 Zero Balance	±5%R.O.
容許負荷 Safe Overload Rating	120%
導線長度 Cable Length	3m
接線方式 Cable Connection	Input:Red(+)/Exci : Black(-)/Exci Output:Green(+)/Sign White(-)/Sign