

LRM LOAD CELL

本LRM型荷重元(LRM Load cell)施力點與固定點在同一軸線上，並採用圓柱型結構，安裝容易且非常穩固，本型荷重元並以外殼保護感應部分，非常精確，堅固耐用。適用於吊秤及各式重量及力量量測上，具有以下特點：

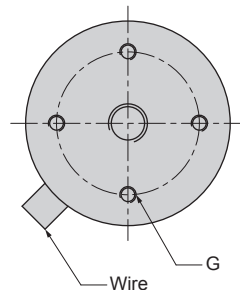
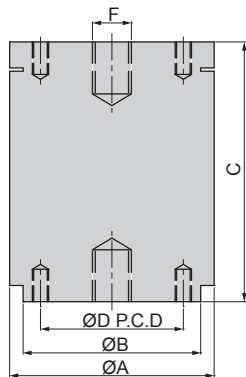
This LRM type load cell let force and fixed point at the same axis. Moreover, it constructed of spherical structure, it is very stable and easy to install. An outer shell protects the sensing element. Very high precession, rigid and durable.



特點 Features

- 控壓兩用 **Tension and compression**
- 結構穩固 **Stable and rigid**
- 高精度 **High accuracy**
- 安裝容易 **Easy installation**
- **LRM- 2, 5, 10, 20, 35, 50, 100, 200, 350, 500 kgf**
LRM- 1, 2, 3, 5, 10 tf

Installation Dimensions



TYPE	A	B	C	D	F	G
LRM-2	64	54.7	60	44	(2)M8×1.25×12 deep	(8)M4×0.7×8 deep
LRM-5						
LRM-10						
LRM-20						
LRM-35						
LRM-50						
LRM-100	64	54.7	80	44	(2)M12×1.75×16 deep	(8)M5×0.8×8 deep
LRM-200						
LRM-350						
LRM-500						
LRM-1 tf						
LRM-2 tf	83	73	100	50	(2)M16×2.0×20 deep	(8)M10×1.5×15 deep
LRM-3 tf	88	78	120	55	(2)M20×2.0×25 deep	(8)M12×1.75×18 deep
LRM-5 tf						
LRM-10tf						
LRM-10tf	115	105	180	70	(2)M30×2.0×40 deep	(8)M12×1.75×18 deep

Specification

額定輸出 Rated Output	2.0mV/V(LRM 2~5 :1.0mV/V)
總和誤差 Total Error	±0.05%R.O.
重現性 Repeatability	±0.03%R.O.
潛變 Creep	0.05%/20min
輸入阻抗 Input Resistance	430 or 405 ± 25Ω
輸出阻抗 Output Resistance	350Ω
最大輸入電壓 Max. Excitation Voltage	20V
建議輸入電壓 Recommended Excitation Voltage	10V
溫度補償範圍 Compensated Temp.Range	-10°C~50°C
使用範圍 Safe Temp. Range	-20°C~70°C
溫度對零點之影響 Temp. Effect on Zero Balance	0.05%/10°C
溫度對額定輸出之影響 Temp. Effect on Rated Output	0.03%/10°C
零點誤差 Zero Balance	±3%R.O.
容許負荷 Safe Overload Rating	150%
導線長度 Cable Length	3m
接線方式 Cable Connection	Input:Red(+)Exci : Black(-)Exci Output:Green(+)Sign White(-)Sign